



だよ
スタディーセンター便り 2009年 秋号

秋の学園祭-School Festivals in the Fall



or many of the universities in Japan, including EAP's host schools, fall is a season for School Festivals/Gakuensai / 学園祭 (Gakusai in short).

School Festivals usually takes place over one weekend in autumn for a couple of days. During the festival, many circles or clubs will become vendors to sell snacks and drinks, music performers will sing out loud both professional and amateur alike, school queen contest might take place (or the school king contest), academic discussion/debate or lecture might be going on, or theatrical play might be shown. For high school students, these festivals will be one of the valuable occasions to visit and see inside of universities they aim to enter (as you know, to get into universities in Japan, you will need to study hard to pass the entrance exam, for most cases).

This year, most of our host universities will have Gakuensai at the end of October or in the middle of November.

Following pages will have list and some information of school festivals of our host universities. Since most of the festivals are open to the public and its community, why don't you visit a couple to feel the festivity atmosphere and pick up a few "Yakisoba" or "Choco-Banana"?

*It is not guaranteed that these snacks will be available at all sites..

Signing-Out:

If you'll be away for more than 24 hours, make sure to sign-out with EAP/Study Center. You can do this by signing in to MyEAP and submit "Travel Notifications" or simply let us know via e-mail.

MyEAP Website:

<https://myeap.eap.ucop.edu/Galileo/Outbound/Login.aspx>

Contents:

School Festivals in the Fall.....	1-3
Kanji Quiz—Autumn Theme.....	1
Kotowaza (Japanese Saying).....	4
"Autumn in Red".....	4

Kanji (漢字) Quiz:

These are Kanji of vegetables, fruits and plants that harvest in Autumn Season. How many do you know? わかるかな?

- | | |
|-----------|------------------------------------|
| 1. 秋桜 | a. ごぼう (burdock roots) |
| 2. 公孫樹/銀杏 | b. たまねぎ (onions) |
| 3. 牛蒡 | c. さざんか (camellia sasanqua) |
| 4. 山茶花 | d. もみじ / こうよう (Autumn leaf colors) |
| 5. 団栗 | e. コスモス (cosmos) |
| 6. 玉葱 | f. かき (persimmons) |
| 7. 紅葉 | g. どんぐり (acorns) |
| 8. 柿 | h. いちょう (Ginkgo) |



*Answers will be on the bottom column on page 3

秋の学園祭-School Festivals in the Fall

TSURU University (桂川祭)

2009 Theme: "CHANGE!"

Dates: October 29th-31st, 2009

Location: Tsuru-shi, Yamanashi Pref.

Transportation: 5 minutes walk from Tsuru Bunka Daigaku Mae Station, Fuji Express Line (富士急行線 都留文学科大学前駅)

Website: <http://ktr54.blog.shinobi.jp/>

SOPHIA University (ソフィア祭)

Dates: October 31st-November 3rd, 2009

Location: Yotsuya Campus, Chiyoda-ku, Tokyo

Transportation: 5 minutes walk from JR Chuo Line, Metro Marunouchi & Nanboku Line: Yotsuya Station, Akasaka Exit (中央線、丸の内線、南北線 四ツ谷駅 赤坂口)

Website: <http://www.sophia-festival.com/>

Hours: 10:00 AM ~ 4:00 PM (11/1, 2)

10:00 AM ~ 5:00 PM (11/3)

HITOTSUBASHI University (一橋祭)

Dates: October 31st-November 2nd, 2009

Location: Kunitachi-shi, Tokyo

Transportation: 6 minutes walk from JR Chuo Line, Kunitachi Station, South Side. (中央線 国立駅)

Website: <http://jfn.josuikai.net/student/ikkyosai/>

Hours: 10:00 AM ~ 4:30 PM

OSAKA University (まちかね祭)

Dates: November 1st - 3rd, 2009

Location: Toyonaka Campus, Toyonaka-shi, Osaka

Transportation: 15 minutes walk from Hankyu Takarazuka Line Ishibashi Station, OR 10 minutes walk from Osaka Monorail Shibahara Station. (阪急電車宝塚線 石橋駅 OR 大阪モノレール 柴原駅)

Website: <http://www.machikanesai.com/>

International Christian University (ICU祭)

Dates: October 31st-November 1st, 2009

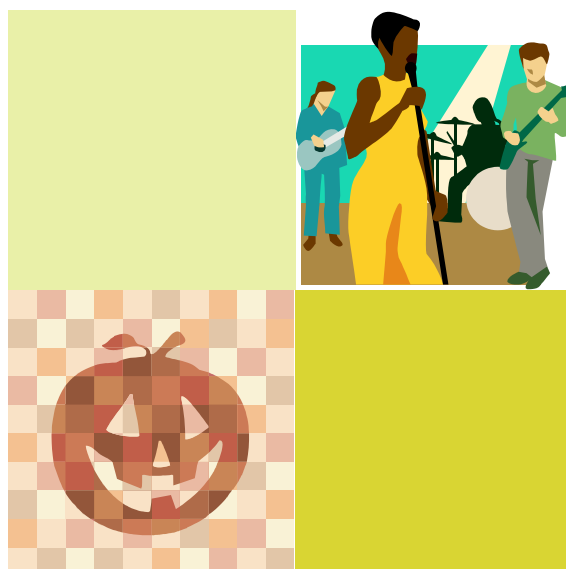
Location: Mitaka-shi, Tokyo

Transportation: 10 minutes by bus from JR Chuo Line Musashisakai Station, South Side (中央線 武蔵境駅)

Website: <http://www.icu-fes.com/index.html>

Hours: 10:00 AM ~ 8:00 PM (10/31)

10:00 AM ~ 6:30 PM (11/1)





KEIO University (三田祭)

Dates: November 20th-23rd, 2009

Location: Mita Campus, Minato-ku, Tokyo

Transportation: 8 minutes walk from JR Yamanote Line Tamachi Station, Mita/West Exit (山手線 田町駅 三田口 (西口))

Website: <http://www.mitasai.com/>

Hours: 10:00 AM ~ 6:00 PM

TOKYO University (駒場祭)

Dates: November 21st-23rd, 2009

Location: Komaba Campus, Meguro-ku, Tokyo

Transportation: 1 minute walk from Keio Inokashira Line Komaba Todai Mae Station. (京王井の頭線 駒場東大前)

Website:

<http://www.a103.net/komabasai/60/visitor/main/>

Hours: 9:00 AM ~ 6:00 PM (11/21, 22)

9:00 AM ~ 5:00 PM (11/23)

TOHOKU University (東北大学祭)

Dates: November 21st-23rd, 2009

Location: Kawauchi Kita Campus, Sendai-shi, Miyagi

Transportation: About 15 minutes bus ride from JR Sendai Station. (仙台駅)

Website: <http://www.festa-tohoku.org/index.html>

DOSHISHA University (同志社EVE)

Dates: November 25th-28th, 2009

Location: Imadegawa Campus, Kamigyo-ku, Kyoto-shi

Transportation: less than a minute away from Imadegawa Station of Karasuma Subway Line (地下鉄烏丸線 今出川駅)

Website: <http://www.doshishaeve.com/>

ANSWERS TO KANJI QUIZ ON P.1

- | | |
|--------|--------|
| 1. - e | 5. - e |
| 2. - h | 6. - h |
| 3. - a | 7. - a |
| 4. - c | 8. - c |



秋のことわざ・慣用句 (Japanese Saying)

1. (a)高く (b)肥ゆる秋

2. (c)日 (d)秋

3. 秋茄子は (e) に食わずな

4. (h)さ (i)さも彼岸まで

1. 「(a. 天・てん)高く (b.馬・うま)肥ゆる秋」

-Original Saying in China meant "Always be alarmed of the enemies invading. (in the harvesting season)". However, in Japan, the expression is simply used to refer to a rich harvest and appetizing season of autumn.

2. 「(c. 一・いち)日 (d. 千・せん)秋」

-To look forward to something eagerly. Literal translation is "when you are waiting for something, one day feels like forever (or one thousand autumns)".

3. 「秋茄子は (e. 嫁・よめ)に食わずな」

-Never feed a bride autumnal eggplants. There are several interpretation of it. Most common interpretation is "because egg plants cools down your body, it is not good to eat too many of them".

4. 「(h. 暑・あつ)さ (i. 寒・さむ)さも彼岸まで」

-The heat (of summer) and coldness (of winter) will be eased when in "Higan" period.

*"Higan" is a weather term and lasts for about a week around March 20th in Spring and September 20th in Autumn.



『真赤(まっか)な秋』 (Autumn in Red)

Lyrics: Tadashi Satsuma (薩摩忠) Music: Hideo Kobayashi (小林秀雄)

まっかだな まっかだな *All are red, all are red*

つたの葉っぱが まっかだな *Leaves of Ivy have turned red*

もみじの葉っぱも まっかだな *Leaves of Maple Trees are also red*

沈む 夕日に てらされて *Shined upon by a setting sun*

まっかなほっぺたの 君と僕 *We have red cheeks, both you and me*

まっかな 秋に かこまれている *We are surrounded by the Autumn in Red*



University of California, Tokyo Study Center

c/o International Christian University
3-10-2 Osawa, Mitaka-shi, Tokyo
181-8585 JAPAN

TEL: (0422) 33-3118
FAX: (0422) 32-0393
Website: <http://www.uctsc.org>