

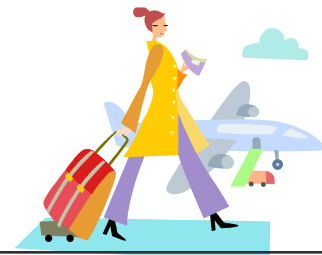
Directions From Haneda Airport To Monthly Resi-Stays TAKADANOBABA

If you are arriving at Haneda Airport, take the Keikyu Line (京急線), specifically, Keikyu Airport Line “AIRPORT EXPRESS (エアポート急行 – *airport kyuko*)” or “AIRPORT LIMITED EXPRESS (エアポート快特 – *airport kaitoku*).”

Keikyu Line station is directly connected to the Haneda Airport International Terminal Arrival Lobby on the 2nd floor.

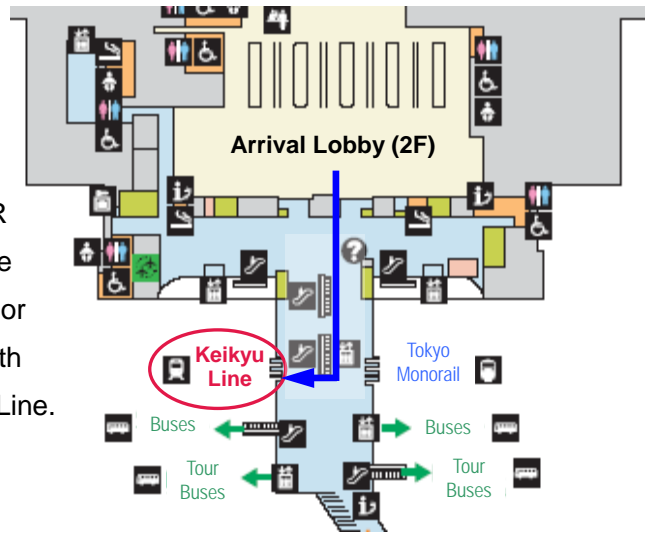
See the movie below showing how to access the station.

<http://www.haneda-tokyo-access.com/en/movie/>



Fee: 610 yen
(601 yen if paid with IC Card)
Total Travel Time: 60 minutes

Haneda International Terminal Station (羽田空港国際線ターミナル駅)



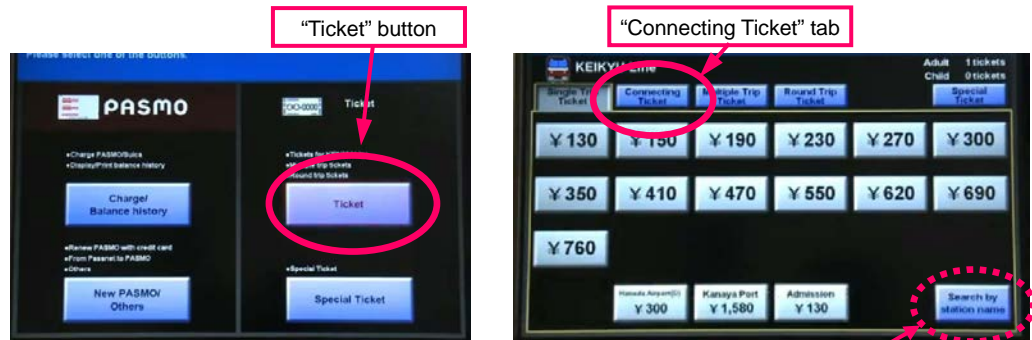
Purchase a ticket all the way to JR Takadanobaba Station either at the Keikyu Tourist Information Center or from a ticket vending machine, both located at the entrance of Keikyu Line. Total fare should be ¥610.



15-20 min.

When you buy a ticket from a vending machine, you can choose a language on the vending machine display. Press the “ticket” button and select “connecting ticket” tab, then buy a ticket to JR Takadanobaba Station via Shinagawa.

You can pick a ticket by choosing the fare to your final destination (¥610) or the station name (Takadanobaba).



See the movie below showing how to buy a ticket.

<http://www.haneda-tokyo-access.com/en/movie/>

Once you go through the ticket gate, proceed to track #2. Again, you need to take Keikyu Airport Line “AIRPORT EXPRESS (エアポート急行 – *airport kyuko*)” or “AIRPORT LIMITED EXPRESS (エアポート快特 – *airport kaitoku*).”



Pay close attention to destinations since there are many. To minimize transfers and keep it simple, you should **AVOID** the following destinations:

Keikyu Kamata (京急蒲田), Keikyu Kawasaki (京急川崎), Kanagawa Shinmachi (神奈川新町), Kanazawa Bunko (金沢文庫), Shinzushi (新逗子), Uruga (浦賀), Keikyu Kurihama (京急久里浜), and Misakiguchi (三崎口).

Keikyu Shinagawa Station (品川駅)

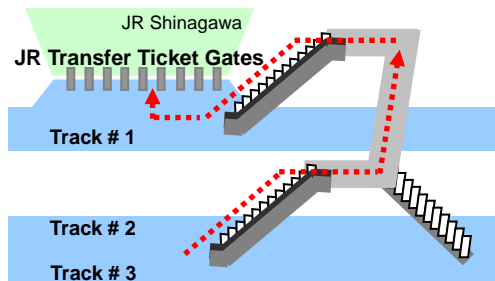


JR Shinagawa Station (品川駅)



Get off at Shinagawa Station and transfer to JR Yamanote Line (JR 山手線). You will be arriving at track #2 of the station. Take the escalator/stairs in the middle of the platform, follow the signs saying “JR 線のりかえ (Transfer to JR Line)” and proceed to track #1 where the JR transfer ticket gates (のりかえ改札口 – *norikae kaisatsu guchi*) are

located.



23 min.

As you pass through the transfer ticket gate, don't forget to take your ticket back from the machine.

Next, take JR Yamanote line bound for “Shibuya (渋谷) and Shinjuku (新宿)” from track #2. It might be easier to find if you remember that Yamanote line trains are light green.



JR Takadanobaba Station, Waseda Exit (高田馬場駅, 早稲田口)

Get off at Takadanobaba Station (10th station from Shinagawa), and go out Waseda exit (早稲田口), **not** Toyama exit (戸山口). Follow the directions below to get to the Weekly Mansion. It takes about 8-10 minutes on foot from the station.



Directions from JR Takadanobaba Station to Monthly Resi-Stays TAKADANOBABA

Once you go out of JR Takadanobaba Station through Waseda Exit (早稲田口) ticket gate (①), turn left and pass under the railway bridge. You will see a red “Bank of Tokyo Mitsubishi UFJ (三菱東京UFJ銀行)” (②) on the right side of the street. Cross over to the right side of the street and go straight until you see “Seiyu (西友)” (③), a supermarket, then turn right at the first corner after Seiyu. You’ll be going down a slope (④). Make a left turn at the end of the slope and go straight on into the residential area. Along the way, you should see “Poplar (ポプラ)” (⑤), a convenience store on your left. Take the right fork (⑥) in the road, and turn right at 7-11 convenience store. (⑦). Go straight and you will see the “Monthly Resi-Stays TAKADANOBABA (マンスリーレジステイズ高田馬場)” (⑧) on your left.

**Numbers in circles coincide with the pictures below.*





① Exit from “Waseda Exit (早稲田口)” ticket gate at JR Takadanobaba Station



② Bank of Tokyo Mitsubishi UFJ



③ Turn right just past Seiyu (西友)



④ Go down the slope



⑤ Pass Poplar (ポプラ) – convenience store on your left.



⑥ Go right at the fork (Y-intersection)



⑦ Turn right at 7-11 Convenience Store



⑧ Monthly Resi-Stays TAKADANOBABA (マンズリーレジステイズ高田) will be on the left-hand side.
3-18-3 Takadanobaba, Shinjuku-ku, Tokyo 169-0075
〒169-0075 東京都新宿区高田馬場 3-18-3
TEL: 03-3368-1381



URL: <https://www.mystays.com/ja/hotel/tokyo/takadanobaba>

